



# Grass Cuttings



## Newsletter of Sale Horticultural & Allotment Society –March 2009

### Chairman's Report



At the AGM I gave a brief resume of our 2008 season.

We had a mixed year weather-wise, good, bad and indifferent—sounds like a play or tune title.

We finally had our water supply reconnected in late spring.

Our plant sale was again a great success. Thanks to our team of helpers and to our members for their patronage, we managed to sell all our plants. We may have a little problem this year for tomato plants as our regular suppliers, Batemans, have sold their nursery to accommodate apartments. We will try to make alternative arrangements.

We have experienced vandalism yet again to huts and to equipment, and our gates at the Glebelands Road end have again been damaged by a vehicle crash. These gates will soon be replaced.

Let me return to good activities, the special allotment plot for slow learning and the disabled is 95% complete and is being worked. Please wander down our top path by the trading huts and see the design and work done by people doing community service.

Our Pumpkin competition and BBQ was a sell out and a great success and we plan to repeat it again this year.

Before closing, I thanked on your behalf, your committee and our members who have given their time to help our society.

Don Jackson

### **Plant Sale 2009**

**Saturday 16<sup>th</sup> May**

Every year we hold a sale of bedding plants for society funds. The plants come from Halman's Nursery in Lower Peover. They are of good quality and at competitive prices. Some of our prices are lower than last year!

We make up your orders in advance. This year we are asking you to collect them between 11am and 1pm on Saturday morning. As ever we would welcome any help from 8.30am onwards to unload the plants, and make up the orders.



Please fill in and return the attached order form keeping a record on the other form supplied.

**The deadline for handing in your order with payment is Sunday 26<sup>th</sup> April.**

If you will be away on Saturday 16<sup>th</sup> May, please make your own arrangements for the plants to be collected and looked after until you return.

**Surplus plants** There is usually a small surplus of some plants which will be sold on Sunday 17<sup>th</sup> May. Call in and see what's on offer.

### **Committee Contact details**

|  |              |  |
|--|--------------|--|
| Don Jackson  | Chairman     | 973 5256   |
| <a href="mailto:chairman@shas.org.uk">chairman@shas.org.uk</a>       |              |  |
| Plot 50  |              |  |
| Sylvia Steer   | Secretary    | 282 8664   |
| <a href="mailto:secretary@shas.org.uk">secretary@shas.org.uk</a>     |              |  |
| Plot 13  |              |  |
| Peter Baggaley   | Treasurer    | 962 5642   |
| <a href="mailto:treasurer@shas.org.uk">treasurer@shas.org.uk</a>     |              |  |
| Plot 7   |              |  |
| Tony Turnbull  | Membership   | 973 1946   |
| <a href="mailto:memberships@shas.org.uk">memberships@shas.org.uk</a> |              |  |
| Plot 21  |              |  |
| Linda McLachlan  | Allotments   | 962 2920   |
| Plot 60a   |              |  |
| Alf Edwards  | Trading Hut  | 282 0048   |
| Plot 41  |              |  |
| David Taylor   | Equipment    | 973 0867   |
| Plot 27  |              |  |
| Kevin Brooks   | Grasscutting | 962 3218   |
| Plot 38  |              |  |
| Ken Bostock  |              | Plot 46  |
| Louise Black   |              | Plot 36  |
| Jonathan Richards  |              | Plot 62a   |
| Society Website  |              | <a href="http://www.shas.org.uk">www.shas.org.uk</a> |

### **Welcome to new Committee member,**

**Louise Black**

I've loved gardening for many years, but not previously grown vegetables until I took over my plot two and half years ago. I spent the first few months pestering fellow allotment holders for advice. I've worked as a volunteer at Tatton Park to gain



experience before embarking on a course in horticulture at Reaseheath.

I'm now working part time in Salford as garden tutor for people experiencing mental ill health, where gardening is used for its therapeutic benefits.

My dining room is currently the potting shed with seed trays of seedlings everywhere, not everybody approves of this, but the cat seemed to find the tray of basil seedlings comfortable.

Louise has plot 36

## AGM news

Townscroft Lodge at the corner of Ashton Lane and Glebelands Rd, proved to be a better venue in all respects for the AGM.

**Membership Sec. Tony Turnbull** reported a membership in 2008 of 152.

Of the 152 members, 88 were active plot holders making a balance of 64 'social' members.

**Membership fees** set by SHAS are used primarily for social and communication purposes including Grass Cuttings

Website

Halloween night

Talks and trips

Plant Sale and

Trading Hut

i.e activities that

benefit all members whether they are plot holders or not.

### Plot Rentals

TBC set the rent for the site and this determines the plot rental which SHAS charges our plot holders.

TBC gives us a management allowance, currently at 38%, which is their estimate of the cost of managing the site.

This covers management costs-collecting the rents, insurance, site and building maintenance etc. As committee and volunteers give their time free, there is a surplus, which we can spend as we wish on site improvements, lawn mowers etc.

We are about to negotiate the terms of our new lease with Trafford.

Looking forward to 2010, Tony said that we would not be seeking any increase in the membership fee, however TBC's plot rental charges would be increasing over the next 3 years and this would be reflected in the charges we make to plot holders.

He informed the meeting that the committee had decided that people on the waiting list must now be members of the society and finished by thanking all members who paid their annual fees promptly.

### Allotment Secretary,

**Linda McLachlan** reported that only 5 plots had been re-let since the last AGM, one of which had been created by a member allowing the re-let of

part of his plot.

As a result of our request that people on the waiting list should

become members of the society, the list has been reduced to approximately 20.

Security continued to be a problem, with sheds being broken into on more than one occasion. She asked that missing items should always be reported to the committee so that all incidences could be reported to the police. It was essential to lock the gate on leaving the site.

**The site had benefited from a clear up of non-compostable rubbish in October 2008 when a skip was hired. Members were reminded that it was their responsibility to remove their own rubbish. Help could be sought from the committee if necessary.**

The Volunteer scheme advertised in Grass Cuttings had resulted in one person on the waiting list offering help. She urged any plot holder who would like assistance with their plot to contact her.

Finally she advised the first plot inspection of 2009 would be in April.

### Trading Manager, Alf Edwards

thanked all volunteers who served in the Trading Hut on Sunday mornings during 2008.

He particularly thanked Elaine Watson and Tom Rain who regularly bag up and label the bulk stock. Without this help the Trading Hut could not function.



He reported like for like sales at £1081.56 which was down £40 from 2007. Despite a sharp increase in the cost of fertilisers, (70% on Phosphates) we will continue to keep our margins to a minimum and pass on the benefit of wholesale bulk buying to our members. He urged members to make full use of the facility and is always open to suggestions for further improvement to the Trading Hut.

**Treasurer Peter Baggaley**, presented the audited annual accounts for the year ended 31<sup>st</sup> December 2008.

There was a profit for the year of £538.17

The balance at the bank varied between £3000 and £6000

He had paid for employers' liability cover insurance and in so doing had included all plot holders in the cover provided by NSALG. This

would enable any plot holder to take out their own cover for shed and contents at preferential rates if they so wished.

### Appointment of Officers

All serving officers being willing to stand for re election, were duly elected.

### Election of Committee Members

The following serving members present at the meeting agreed to stand again and were re-elected:

Alf Edwards:

Jonathan Richards:

David Taylor:

Ken Bostock

In addition Louise Black was newly elected to the committee.

### AOB

Concern was expressed about the security of the site. The committee is investigating the cost of improving this. Please make it a habit to lock the gate when you enter the site and certainly when you leave.

**Articles for the newsletter** will be welcomed by Sylvia. Simply send by email or snail mail (ugh!) as printed elsewhere.



### Points of concern for the committee

#### Paths

Your Tenancy agreement binds you to:

**To keep within the plot boundary markers placed by the committee;**

Keep them trimmed and please do not encroach on the lines of the paths. Keep posts and boards well away from the edge of the paths so the mower is not damaged.

#### Fires

**Burning of rubbish is limited to bonfires of dry material in the period 30<sup>th</sup>**

**September to 30<sup>th</sup> April, for a duration not exceeding 60 minutes at a time during which the bonfire must not be left unattended;**

**...Not to cause nuisance or annoyance to neighbouring residents or other tenants, for example by causing excessive smoke .....or obstructing paths;**

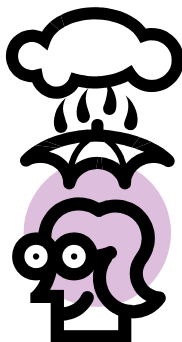


Hugh Begg

### 'In celebration of clouds'

I can hear you muttering, 'What's to celebrate? You should see the flooding on my plot!'

Hugh's talk on the Mersey was very interesting and well supported with diagrams and slides. Please come along and hear what he has to say to change your opinion on clouds!



**St Mary's Church**  
**Tuesday 28<sup>th</sup> July**  
**2.30pm**  
**Free to members**  
**£1.00 to friends**

### A warm welcome to all new members

Do make yourself known at the Trading Hut on Sunday mornings. You will be very welcome to enter the pumpkin and sunflower competitions by growing them in your own gardens if you do not yet have a plot.



### Provision of allotment plots

Those of you on our waiting list may be interested in the figures quoted by the MP for Withington, concerning allotment provision by local authorities in Greater Manchester.

**Trafford has 1,500 plots and 600 on the waiting list and some people have to wait up to six years.**

The Parliamentary Under-Secretary of State for Communities and Local Government said, '...Allotments are valuable green spaces,...and they play a vital role in connecting people to the process of food production and in promoting healthy eating...It may be a century since the Small Holdings and Allotments Act 1908 was passed, but allotments continue to provide benefits to their communities and to grow in popularity.....'

'.....Written representations may be made to the local authority on the need for allotments by any six resident registered electors, or persons liable to council tax and the local authority must take those representations into account. That is provided for in section 23(2) of the 1908 Act. It is for the council to decide whether there is a demand for allotments in its area, and it has a statutory duty to provide a sufficient number of plots.'...

### Seeds: Saving and Sharing

If you have made use of our Kings Discount seed scheme run by Peter Baggaley, you will already have saved money. Seeds will keep well beyond the year in which you buy them so the cost is averaged out over a few years.



Brian Snelson gave us the following list of the shelf life – in years - of opened packets of seeds.

Aubergine 4, Beetroot 4, Broad Beans 3, Broccoli 4, Brussel Sprouts 3, Cabbage 3, Carrot 2, Cauliflower 3, Celeric 4, Celery 4, Chinese cabbage 4, Chives 0 (use or throw!), Cucumber 3, French Bean 2, Kale 3, Kohlrabi 3, Leek 2, Lettuce 4, Marrow 3, Melon 4, Okra 4, Onion 1, Parsley 2, Parsnip 0 (use or throw!), Pea 2, Pumpkin 2, Radish 3, Runner bean 2, Spinach 4, Squash 3, Sunflower 4, Tomato 3, Turnip 4.

To keep safely they need to be stored in a cool, dry, dark place.

Remember: sow thinly to avoid the heart wrenching thinning out and waste of tiny plants later.

Do bring in your unwanted or surplus seeds to the trading hut to offer free to other members.



Include **Sunflowers Pumpkins and Squashes** in your plans this year and you could win a prize!

The target to beat for a sunflower head is 34cm. The height record is yet to be established.

The target weight for a pumpkin is 22.5kg

Prizes are awarded at the Halloween Party October 31<sup>st</sup>.



Please also consider planting any surplus flowers or bulbs in the **memorial hedge** near the Hoe Down. It would be good to see this area create a colourful welcome for visitors and members alike.

### TRADING HUT

Open each Sunday morning, February to June. then

twice in July and August.

Please make use of it to buy your gardening supplies at wholesale prices.

**Here are a few sample products that we stock:**

#### Growbags -

Good quality 4-plant  
£1.50 each.

**John Innes 25 litre soil-based compost –**  
£2.80

**Clover multi-purpose compost –**  
**75 litre 3.80**  
**40 litre– £2.60**

**Slug Pellets,**  
500 g. - 95p

**Growmore,**  
3 kg. - £1.70

**Rose fertiliser,**  
3 kg. - £1.80

**Spring/Summer Lawn Feed,**  
3 Kg - £2.00

**Lawn Sand (moss killer),**  
3kg. - 95p.

### Signs of Spring

Rhubarb forced under a tub...



**Plot Inspections after Easter!**





**Sale Horticultural & Allotment Society's Annual Plant Sale 2009**

| Order Quantity                                       | Plants Description   | Plants per Tray  | Cost per tray/pot | Total Value |
|--|--|------------------|-------------------|-------------|
|  | AGERATUM blue  | 6                | £1.90             |             |
|  | ALYSSUM White  | 12               | £1.90             |             |
|  | ANTIRRHINUM Mixed Colours  | 12               | £1.90             |             |
|  | ASTER Mixed  | 12               | £1.90             |             |
|  | BEGONIA Mixed  | 6                | £1.90             |             |
|  | CHRYSANTHEMUM gold plate   | 12               | £1.90             |             |
|  | CINERARIA silver dust  | 6                | £1.90             |             |
|  | COSMOS sonata mixed  | 6                | £1.90             |             |
|  | DAHLIA Figaro mixed  | 6                | £1.90             |             |
|  | GAZANIA Daybreak Mixed   | 6                | £1.90             |             |
|  | GERANIUM Mixed   | 6                | £2.90             |             |
|  | GODETIA Azalea Flowered Mixed                                      | 6                | £1.90             |             |
|  | IMPATIENS Mixed  | 6                | £1.90             |             |
|  | LOBELIA Blue (Trailing)  | 12               | £1.90             |             |
|  | LOBELIA Crystal Palace (Dark Blue bush)                            | 12               | £1.90             |             |
|  | LOBELIA White Lady (bush)  | 12               | £1.90             |             |
|  | MARIGOLD African mixed   | 6                | £1.90             |             |
|  | MARIGOLD French Mixed  | 12               | £1.90             |             |
|  | MESEMBRYANTHEMUM Mixed   | 12               | £1.90             |             |
|  | NEMESIA Carnival Mixed   | 12               | £1.90             |             |
|  | NICOTIANA Mixed  | 6                | £1.90             |             |
|  | PANSY Mixed  | 12               | £1.90             |             |
|  | PETUNIA Mixed  | 12               | £1.90             |             |
|  | SALVIA Red   | 6                | £1.90             |             |
|  | STOCK ten week mixed   | 12               | £1.90             |             |
|  | SWEET WILLIAM Roundabout Mixed                                     | 12               | £1.90             |             |
|  | TAGETES Mixed  | 12               | £1.90             |             |
|  | MIXED PLANTS for baskets or planters                               | tray of 6 plants | £3.20             |             |
| <b>BASKET &amp; PATIO PLANTS in 9cm or 10cm pots</b> |  |                  |                   |             |
|  | BIDENS yellow vigorous trailing                                    | 1                | 90p               |             |
|  | CONVOLVULOUS delicate clear blue flowers, trailing silvery foliage | 1                | 90p               |             |
|  | DIASCIA apricot or orange  | 1                | 90p               |             |
|  | GERANIUM Trailing Ivy Leaf   | 1                | £1.10             |             |
|  | GERANIUM Upright   | 1                | 90p               |             |
|  | NEPETA silver grey variegated foliage trailing habit               | 1                | 90p               |             |
|  | PETUNIA SURFINIA Trailing  | 1                | 90p               |             |
|  | SWEET PEA Spencer Mixed (approx. 12 plants per pot)                | 1                | 90p               |             |
|  | <b>10" planted HANGING POT</b>                                     | Each             | £9.00             |             |
|  | <b>12" planted HANGING WICKER BASKET</b>                           | Each             | £10.50            |             |
|  | <b>18" long planted TROUGH</b>                                     | Each             | £8.50             |             |
|  | <b>10" FUCHSIA HANGING BASKET</b>                                  | Each             | £9.00             |             |

**Total number and value of order (to accompany this order form)**

Return this form. Make cheques payable to 'Sale Horticultural & Allotment Society' and send to Mrs S. Steer, 18 Priory Rd Sale M33 2BR or pay by cash/cheque in the Trading Hut Sunday mornings 10.30am-12noon.

**Last date for orders is Sunday 26<sup>th</sup> April**

Name:

Address:

Tel: